



# CONRAD C144S - EXTRA TIME





Extra Time

## CONRAD 144S EXTRA TIME

Launched in March 2024, the Conrad C144s EXTRA TIME was designed by Reymond Langton Design, with naval architecture by Diana Yacht Design, and interior by M2Atelier. EXTRA TIME offers a supreme level of luxury and comfort.

The exceptional interior spaces of its predecessor ACE have served as profound inspiration for EXTRA TIME, ensuring a seamless blend of elegance and sophistication. The whole in accordance with the philosophy of Italian designers „less is enough.“ The name EXTRA TIME refers to the wonderful time spent on board with loved ones. It can accommodate up to 10 guests in 5 staterooms, including a master suite, and features cabins for 9 crew members.

The yacht is equipped with twin CAT engines, allowing for a top speed of 14 knots and a range of 5,100 nautical miles. She will spend her first season in the south of France. The Conrad C144s series has set a new standard in yacht production, with the first vessel, ACE, receiving nine international awards. The launch of EXTRA TIME marks another milestone in Conrad Shipyard’s legacy of excellence. The yacht is set to be officially christened and delivered to its owner by the end of April 2024. „For our shipyard, another launch is the next success of the company and all its employees. It is a testament to our over twenty years of tradition and experience in building best-in-class superyachts.

EXTRA TIME shines just like her predecessor, ACE. With her timeless silhouette, she will dazzle in every corner of the world,” said Mikołaj Król, CEO at Conrad Shipyard. Notably, hull number #3 from the C144s series is in advanced construction, with delivery planned for Summer 2025, while hull number #4 is available for sale.

The Conrad C144s line was named the best series of 2023 at the Boat International – Design & Innovation Gala Ceremony.

*The ultimate experience on board*







*Quality & Performance*







*Unmatched cruising experience*



*Space and unforgettable pleasure on board*



*Less is enough*



















*Poland's largest superyacht model launched to date*











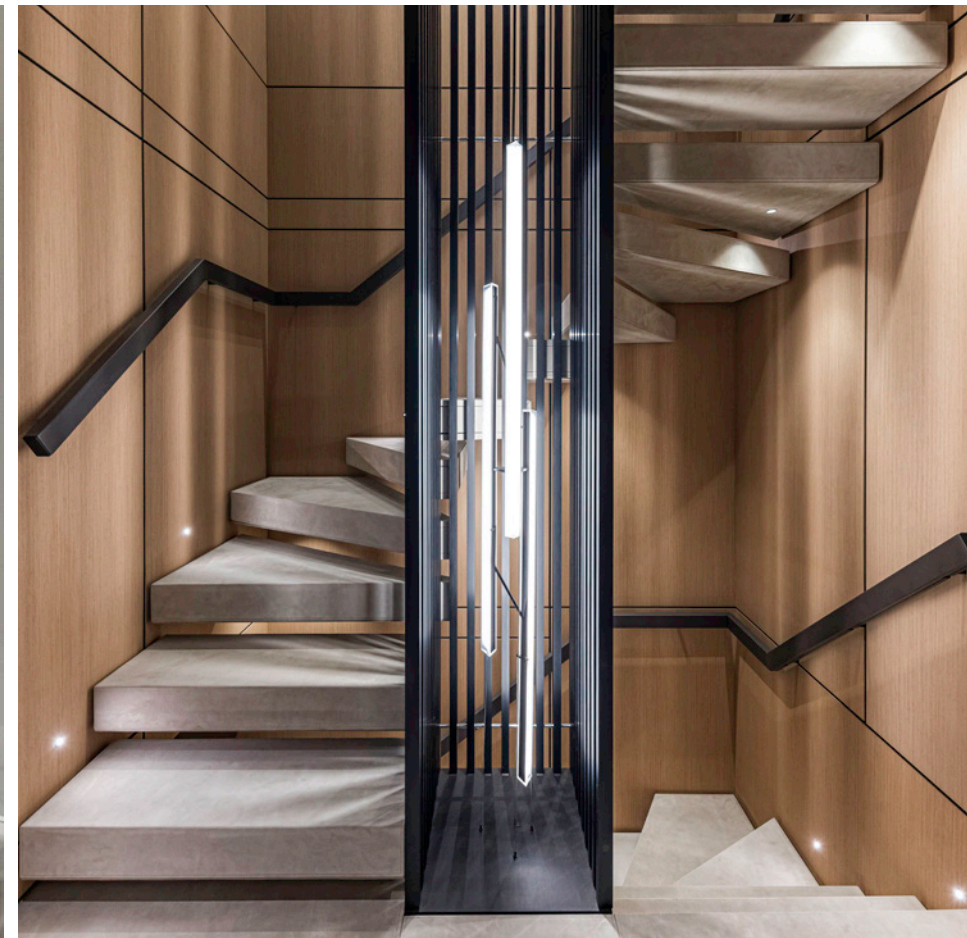


























Type Full Displacement Motor  
 Hull construction Steel  
 Superstructure Aluminium  
 Gross Tonnage 497 GT  
 Class LR ✕ 100A1 SSC Yacht Mono G6,  
 [✕] LMC-UMS SCM, MCA REG Yacht Code

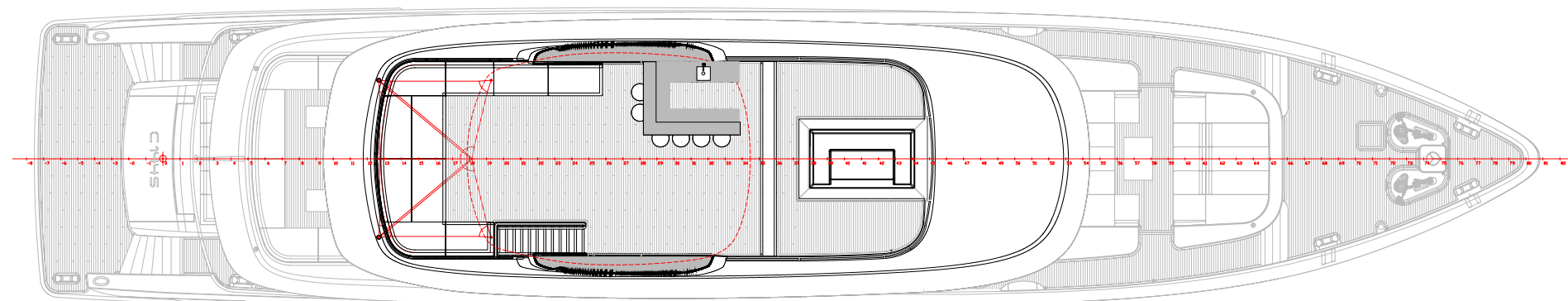
Length overall 44.27 m (145 ft. 3 in.)  
 Length at waterline 42.98 m (141 ft.)  
 Beam 8.90 m (29 ft. 2 in.)  
 Draft 2.45 m (8 ft.)  
 Displacement approx. 472 t  
 Cruising/max speed 11/14,3 kts  
 Range @ 10 kts 5,100 NM

Fuel capacity 51300 l (13552 gal.)  
 Fresh water capacity 11710 l (3093 gal.)  
 Sewage capacity 11300 l (2985 gal.)

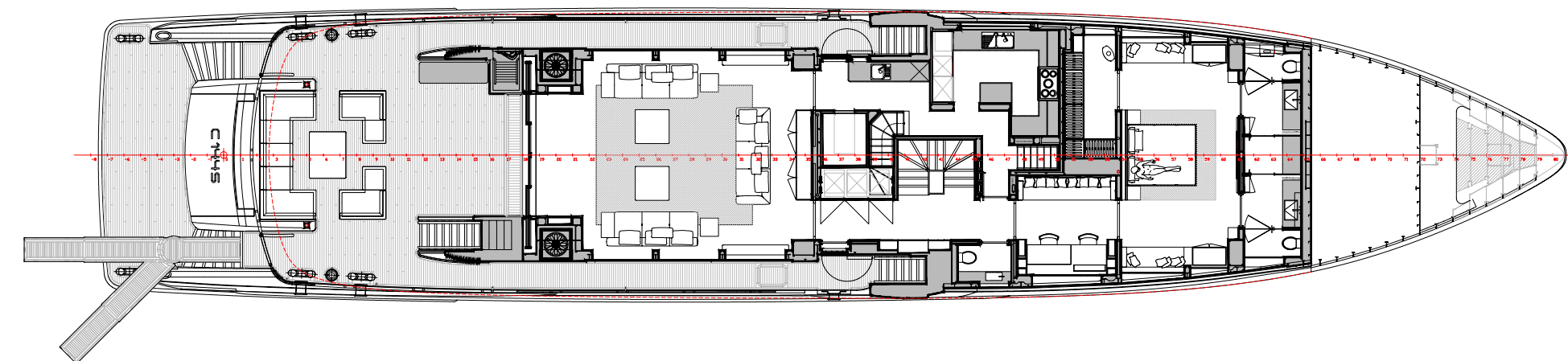
Main engines 2x CATC18 ACERT, D-RATED  
 599 KW@2100rpm  
 Gerboxes 2F W2450  
 Generators 2x CAT C7.1 118 kW  
 Stabilizers CMC Electric Zero Speed  
 Nav-com Furuno, Boeing

Hydraulic system Feebe  
 Air-conditioning Condaria  
 Sewage treatment Hamann AG

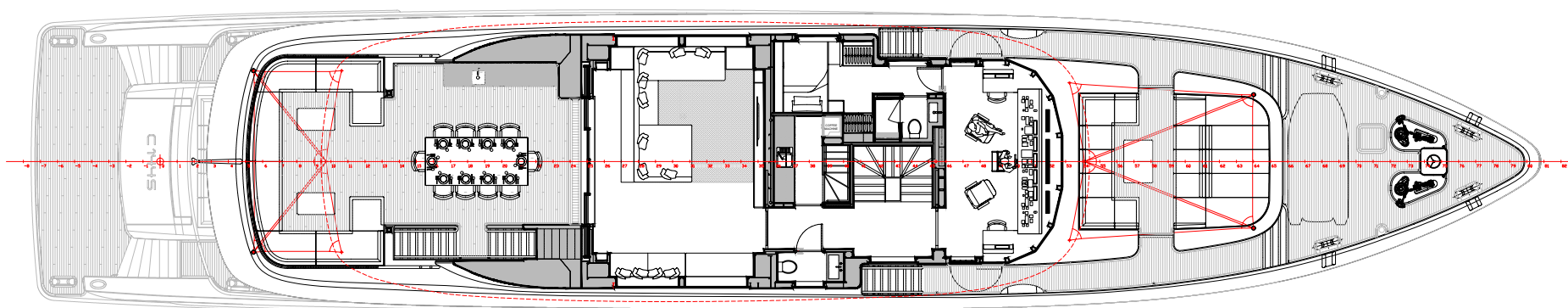
Exterior Design Raymond Langton  
 Naval Architecture Diana Yacht Design  
 Mechanical engineering Conrad Shipyard  
 Interior Design M2 Atelier



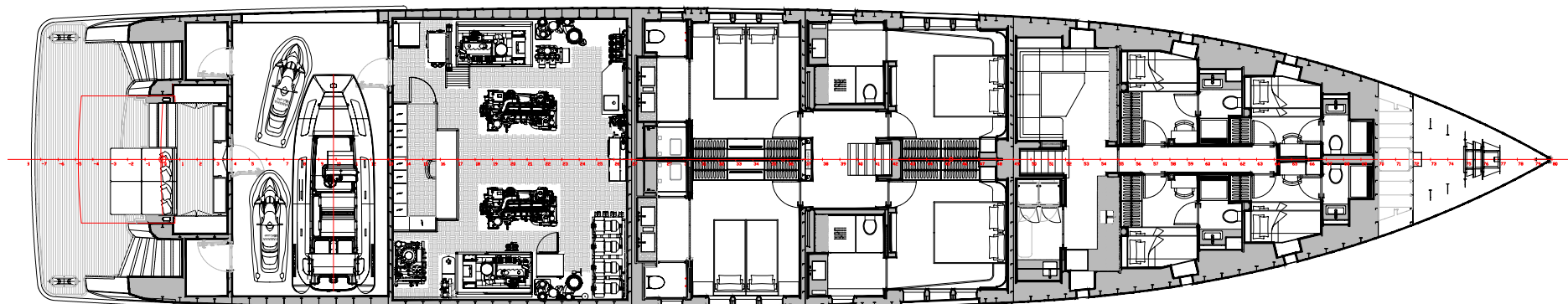
SUN DECK



MAIN DECK



BRIDGE DECK



LOWER DECK



CONRAD  
SHIPYARD  
*Celebrates* 20 *years*

Conrad S.A.  
ul. Sienna 45, 80-605 Gdansk, Poland  
tel. +48 58 320 56 00, fax +48 58 320 56 01  
e-mail: [conrad@conradshipyard.com](mailto:conrad@conradshipyard.com)  
[www.conradshipyard.com](http://www.conradshipyard.com)