



# CONRAD C144S





# ACE

## CONRAD 144S ACE

Launched in October 2022, C144s' ACE is the largest motor yacht ever built in the shipyard's history, but also in Poland. In C144s, the "s" stands for straight bow which makes her even more superb, sleek and sexy! Characteristic, modern, yet timelessly stylish design combines both the harmony of form and the ferocity resulting from the firm lines of the silhouette that ultimately shape the intriguing musculature of the yacht.

The incredibly spacious interior of the yacht with huge panoramic windows provides extraordinary comfort and atmosphere on board, offering an owner's suite plus 4 VIP cabins, as well as 4 double cabins for the crew and a captain's cabin on the bridge. The outer deck is a clever combination of many multi-functional zones, starting from the fantastic aft platform with a beach club, through 4 amazing lounge zones, deck cinema, 2 bars and 2 dining zones, ending with the infinity pool on the highest deck.

Designed by Reymond Langton Design, with naval architecture by Diana Yacht Design and interior decor created by M2 Atelier, she has been recognized as one of the most spectacular launches of the season. ACE has been awarded with: Judges Commendation at World Superyacht Awards 2023, Two International Yacht and Aviation Awards 2023 and Design Elite Award 2023.

C144S is Conrad's first semi- custom model and is available for clients within 24 months. The second hull in the series will be delivered to the Client in April 2024 and the third unit is currently under advanced construction.

*Superb, Sleek and Sexy!*





„The boat is a magnificent combination of harmony, elegance, and sophisticated craftsmanship. This is an entirely different world inside and outside. A piece of art and timeless sculpture, I said to myself with a pride when I saw first C144S ACE on the water for the very first time”

*Mikołaj Król, Conrad's Charmain and CEO*



*Unmatched cruising experience*



*Meeting the highest demands of quality*



"Our signature undercut "rolling wave" on the superstructure reflects the sky above and the water below, simultaneously casting captivating shadows on the decks as the sun moves across the sky"

*Reymond Langton Design Studio*



*State of the art*



*Timeless piece*



*Optimized relationship between space and structure*













"The spaces allowed us to experiment and push the boundaries. Every corner of the boat was designed to create spaces that were like those found in much larger vessels"

*M2 Atelier*

















*Poland's largest  
superyacht to date*





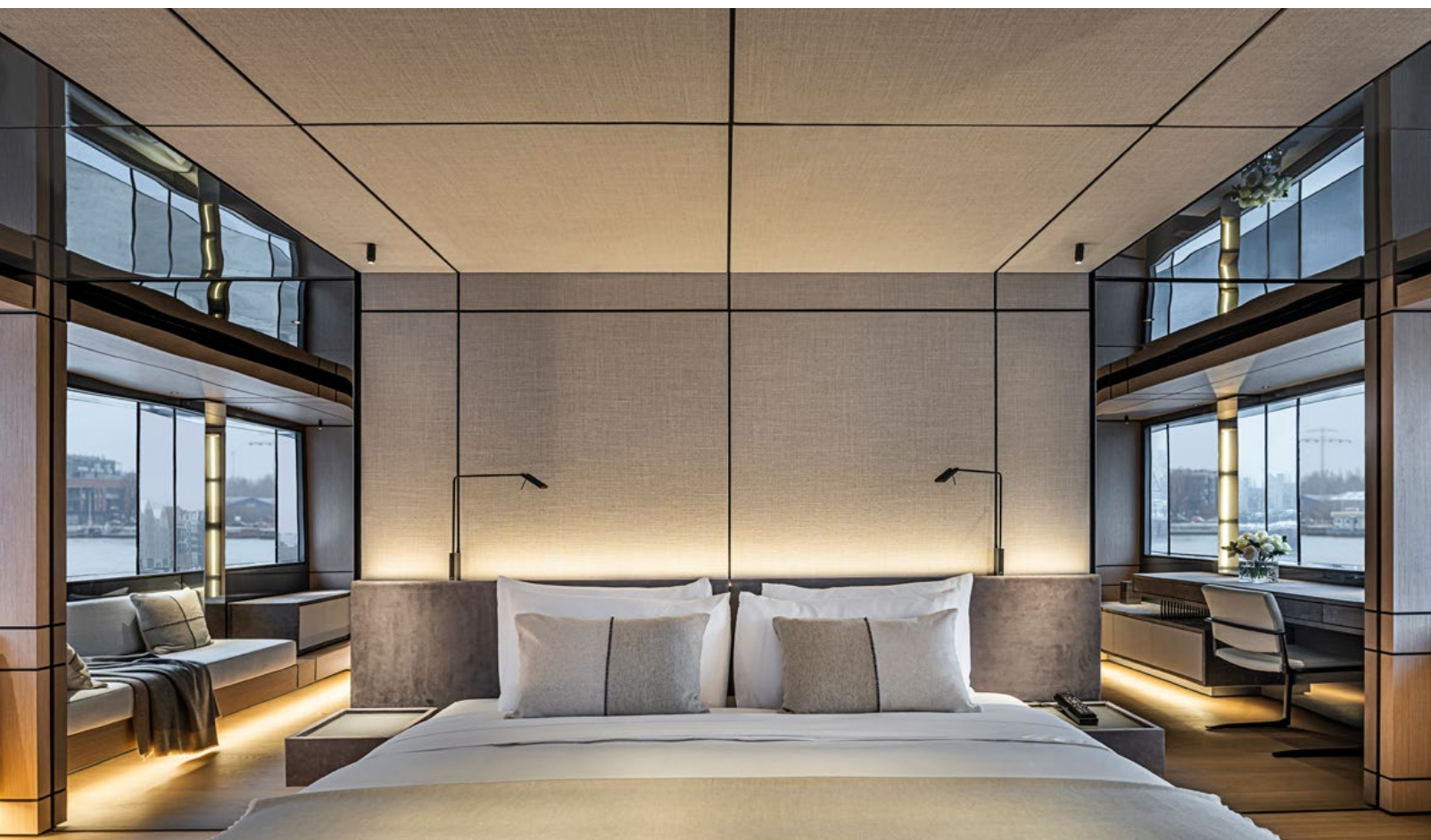








*Finest design*



*Supreme level of luxury living*





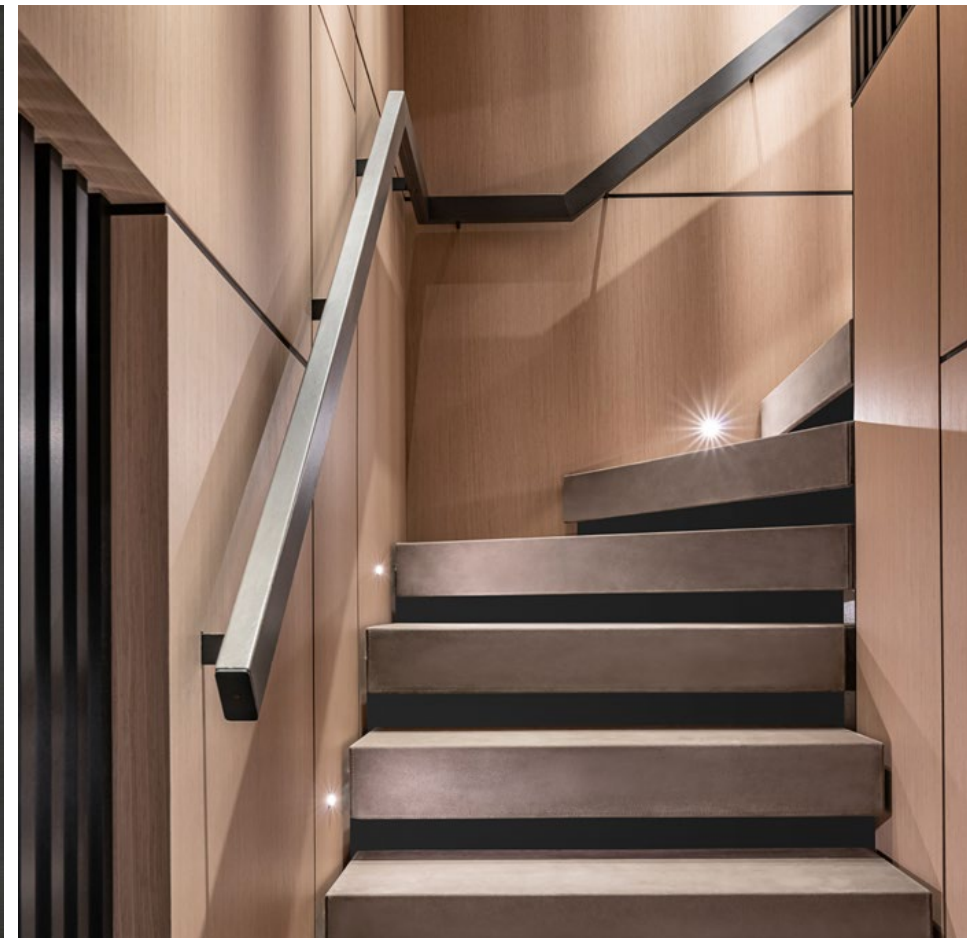
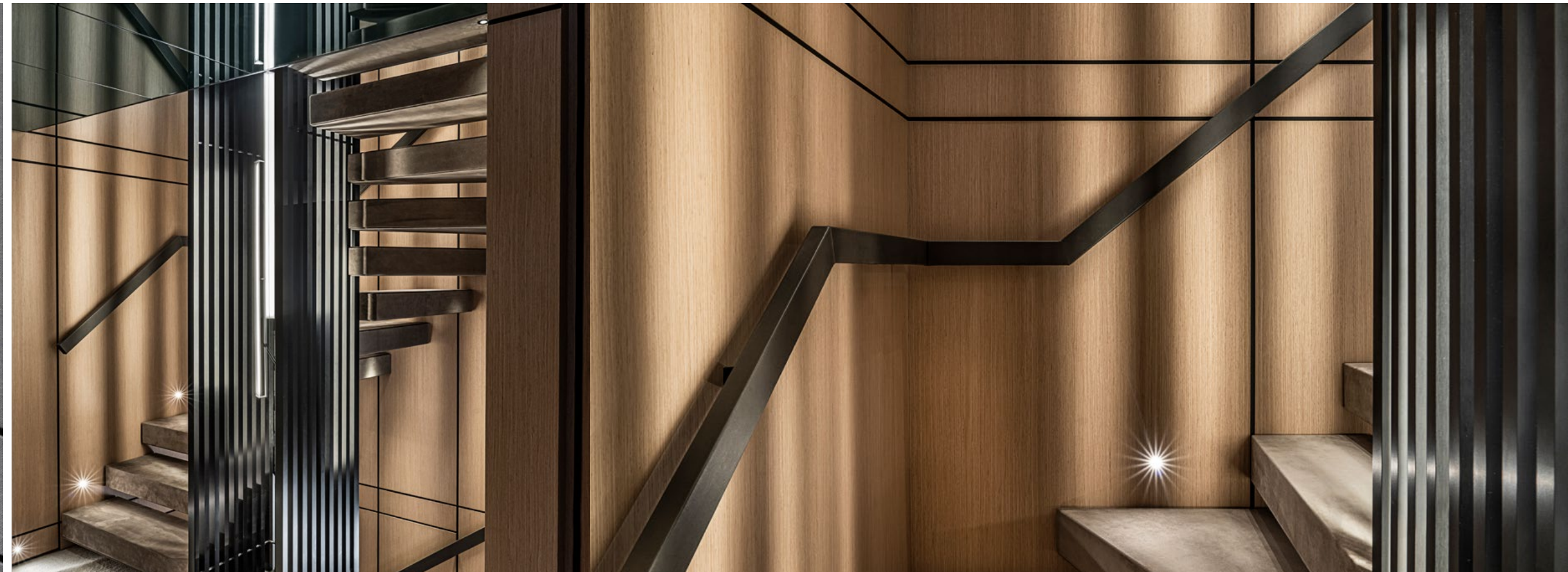




















*Knowledge, experience and technical background*







Type Full Displacement Motor  
 Hull construction Steel  
 Superstructure Aluminium  
 Gross Tonnage 497 GT  
 Class LR ✕ 100A1 SSC Yacht Mono G6,  
 [✕] LMC-UMS, MCA REG Yacht Code

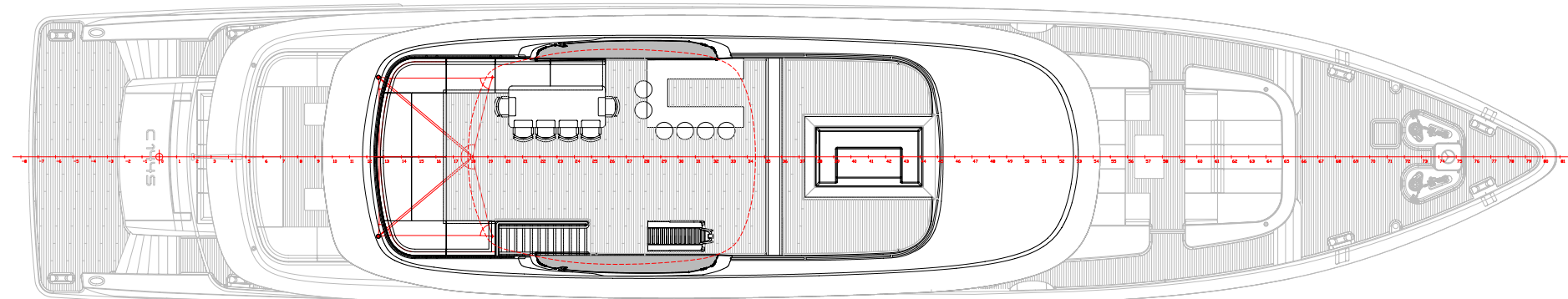
Length overall 44.27 m (145 ft. 3 in.)  
 Length at waterline 42.98 m (141 ft.)  
 Beam 8.90 m (29 ft. 2 in.)  
 Draft 2.45 m (8 ft.)  
 Displacement approx. 472 t  
 Cruising/max speed 11/13,8 kts  
 Range @ 10 kts 5,100 NM

Fuel capacity 51300 l (13552 gal.)  
 Fresh water capacity 11710 l (3093 gal.)  
 Sewage capacity 11300 l (2985 gal.)

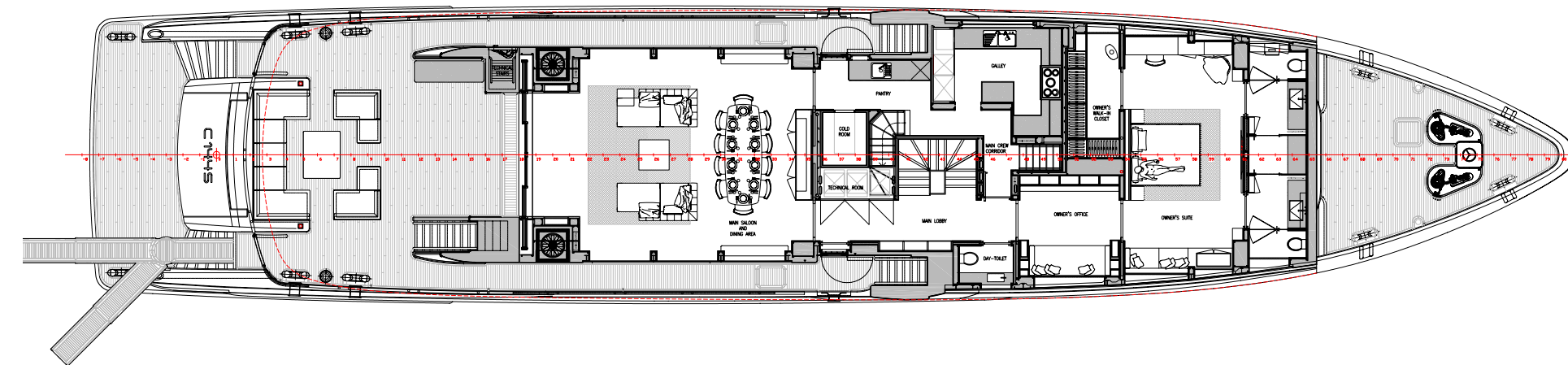
Main engines 2x CAT C18 ACERT, B-rated,  
 500kW @ 2100rpm  
 Gerboxes 2x ZF W650  
 Generators 2x CAT C7.1 118 kW  
 Stabilizers CMC Electric Zero Speed  
 Nav-com Furuno, Boeing

Hydraulic system Feebe  
 Air-conditioning Condaria  
 Sewage treatment Hamann AG

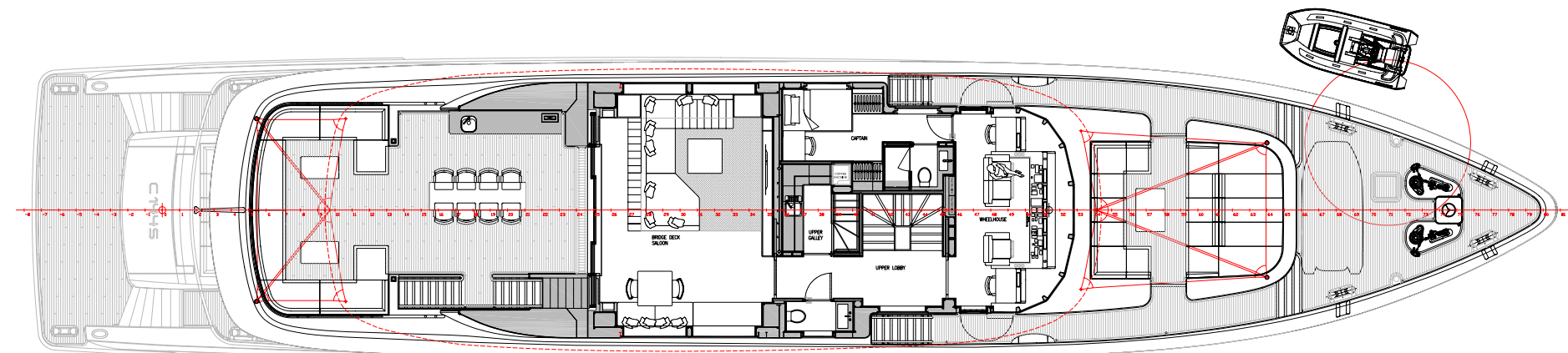
Exterior Design Raymond Langton  
 Naval Architecture Diana Yacht Design  
 Mechanical engineering Conrad Shipyard  
 Interior Design M2 Atelier



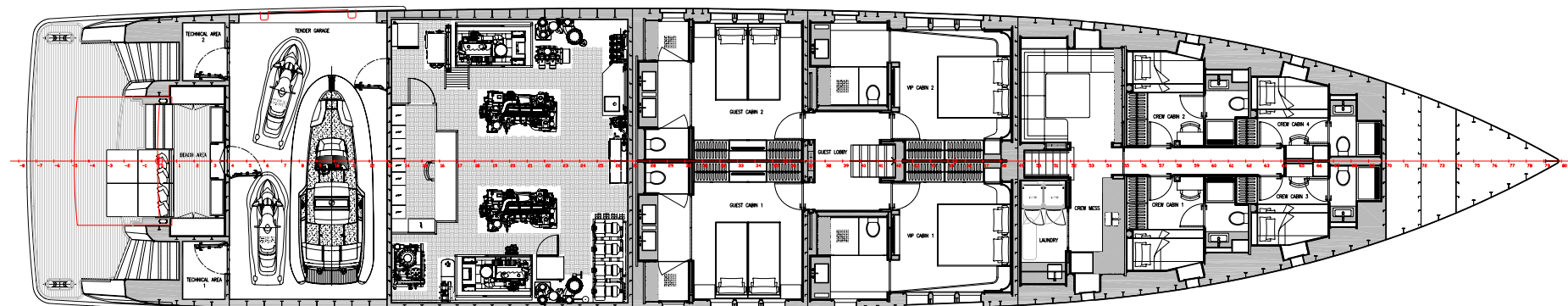
SUN DECK



MAIN DECK



BRIDGE DECK



LOWER DECK



CONRAD  
SHIPYARD  
*Celebrates* 20 *years*

Conrad S.A.

ul. Sienna 45, 80-605 Gdansk, Poland

tel. +48 58 320 56 00, fax +48 58 320 56 01

e-mail: [conrad@conradshipyard.com](mailto:conrad@conradshipyard.com)

[www.conradshipyard.com](http://www.conradshipyard.com)