

THE ONE

YACHT & DESIGN

PINK FLUO ISSUE - n° 37 - 2024 - € 15,00

QUARTERLY - P.I. 31/01/2023 International € 15,00, Chf 15,00, UK € 13,50
Poste Italiane S.p.a. Spedizione in Abbonamento Postale - 70% - LO/MI



*The Art
of Sailing*

**10th
ANNIVERSARY**



Sanlorenzo SX100

A careful study of volumes, perspectives and openings has made it possible to create this 44.50 metre yacht with exceptional real and perceived spaces. The interiors offer an informal, sophisticated style that combine functionality and contemporary design

ACE

by Paola Bertelli
ph. exterior:
Tom Van Oossanen
ph. interior:
Tom Van Oossanen
and Lorenzo Pennati



SCAN ME FOR MORE CONTENTS

ACE is a yacht that surprises on many levels, but the most striking features are her real and perceived spaces. We at *The ONE Yacht & Design* stepped on board during the Monaco Yacht Show where ACE was presented for the first time, just after visiting a 50-metre yacht of a similar type.

Despite the yacht's 44.5 metre length and displacement of 497 GT we felt as if we were on a much larger superyacht: we were immediately impressed by the light, tranquil and extremely liveable interior volumes, achieved through details and solutions that reflect the great efforts made by the entire team.

ACE is the first in the Conrad C144S line by Conrad Shipyard, a boutique yard that builds high-end sail and motor yachts based on the work of an outstanding international team work that includes Britain's Raymond Langton studio for the external lines, Diana Yacht Design in Holland for the hull, the Milan-based m2atelier studio for the interiors, styling and layout of the exterior areas and Nicolai Yacht Consulting & Project Management as consultants and owner's representative.

In line with the owner's specific requirements, ACE is a contemporary yacht with a sober, elegant, informal style inside and powerful, dynamic lines outside, creating a yacht that is sure to exert a timeless, enduring appeal. ACE is laid out over three decks. The main deck hosts the saloon with spacious conversation area but without a dining area, welcoming guests in a relaxing atmosphere with full-height windows that enhance the marine experience. Mirrored ceiling and wall panels open up the space, the light fabric and ceiling colours contrast with the dark details of the floor slats and metal.

Guests will move smoothly throughout the interiors of the ACE, with a wide corridor linking the saloon and master cabin.

As in the lounge, the furniture in the owner's suite – bed, sofa and nightstands – seems to float above the floor, highlighting the search for continuity and broadened perspectives found throughout the yacht, helped by the retracting, full-height sliding doors that provide seamless continuity between the spaces (as Marijana Radovic of m2atelier says, this kind of sliding door is intended to remain open, to connect rather than divide) and the careful effort lavished on alignments, proportions and openings.

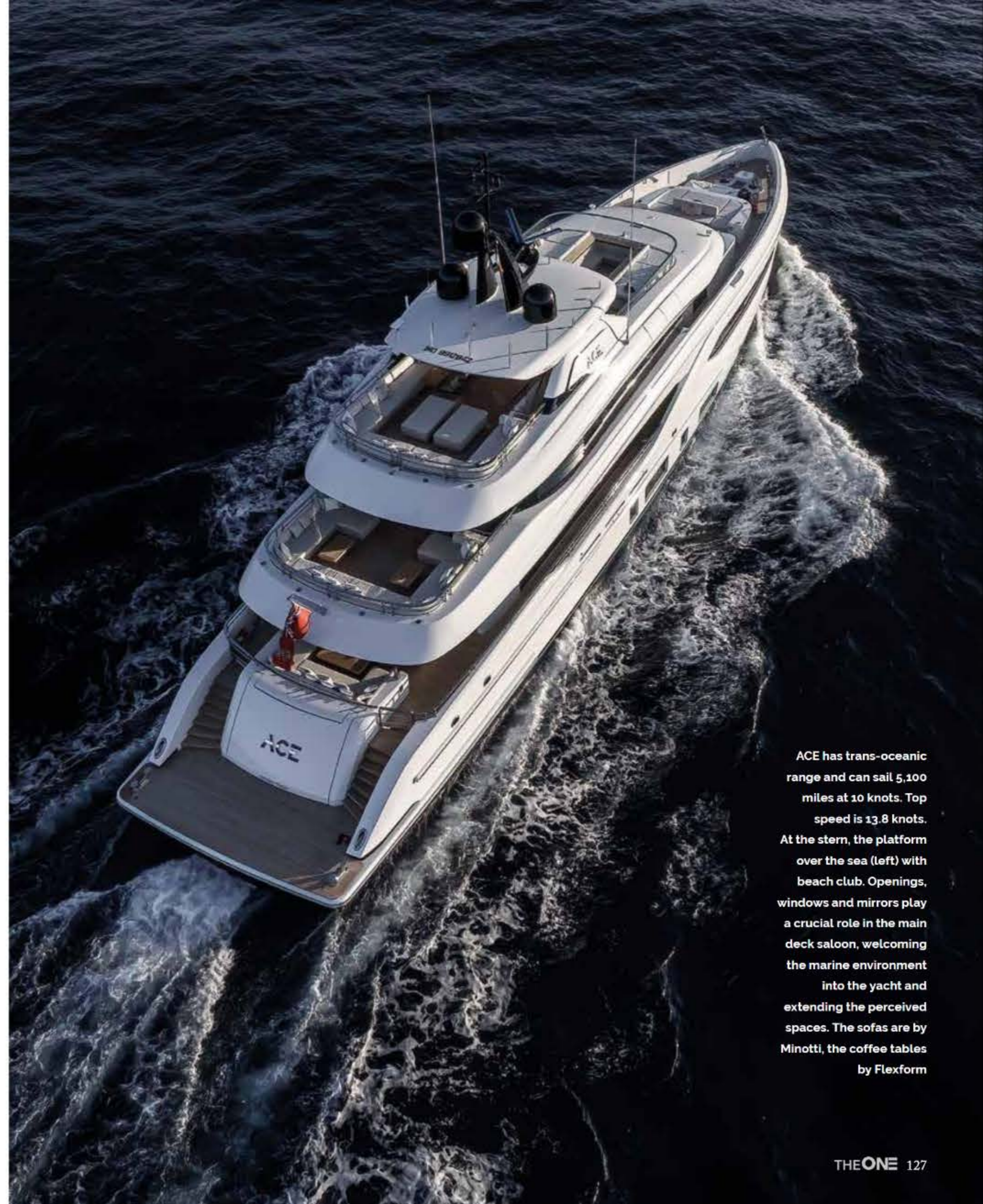
The staircase also enjoy plenty of space, with floating soft leather steps and wooden walls. This distinctive structure stands in the corridors and leads to the upper deck, where guests cross an asymmetrical lounge with a large L-shaped sofa and a bookcase unit that conceals the TV behind a leather panel with raised striped to enter the exterior dining area and lower deck that hosts the four guest cabins and four crew cabins. The captain's quarters are on the upper deck.

The heart of the sun deck is the pool area integrated into the structure, surrounded by a lively play of footboards and steps. At night this deck transforms into an open-air cinema.

The purity and elegance of the design is also reflected by meticulously achieved details like the air-conditioning grilles camouflaged by light decorations in veneer-clad aluminium strips, invisible darkening curtains and the use of only a few, carefully-worked materials like oak, teak, marble, leather, fabrics and metal.

The builders and designers have also succeeded in locating a separate control room in ACE's engine room, a feature usually found only on much larger yachts. This technical detail emphasises the intense care paid to every aspect of this design.

www.conradshipyard.com

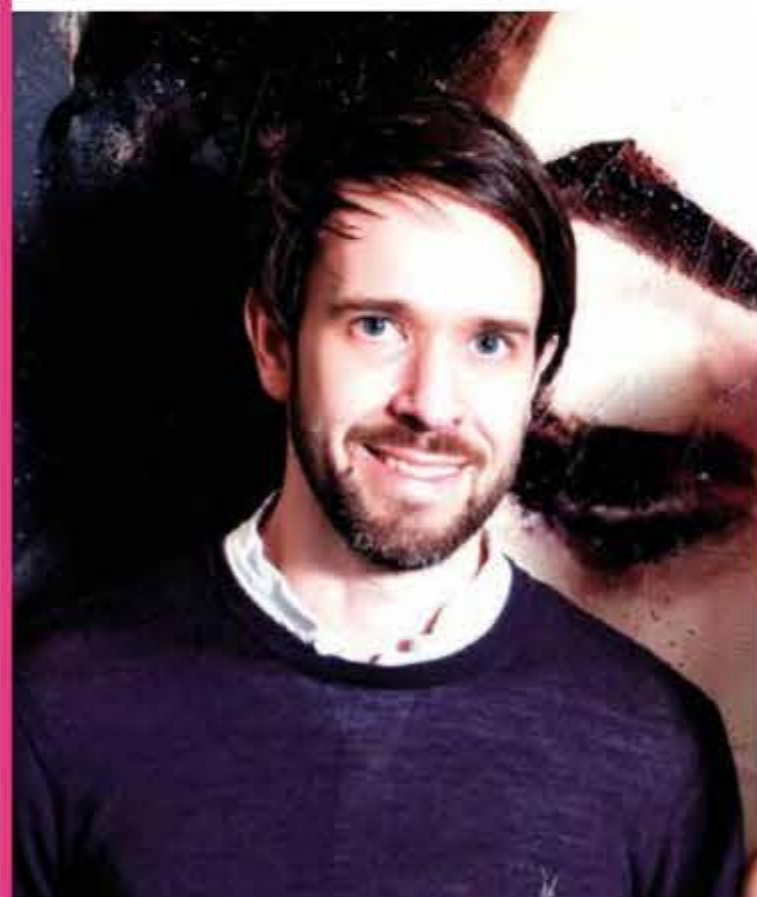


ACE has trans-oceanic range and can sail 5,100 miles at 10 knots. Top speed is 13.8 knots. At the stern, the platform over the sea (left) with beach club. Openings, windows and mirrors play a crucial role in the main deck saloon, welcoming the marine environment into the yacht and extending the perceived spaces. The sofas are by Minotti, the coffee tables by Flexform



Exterior Design

Jon Bevan - Exterior Designer Reymond Langton Design



ACE is characterized by a bold silhouette that displays a powerful, dynamic stance on the water. Seen closer to, the yacht's carefully developed sweeping lines and fine details emerge clearly. On the superstructure the "rolling wave", the distinctive signature of the Reymond Langton studio

This project was the result of a successful collaboration between Conrad Shipyard and Reymond Langton. After the much-praised launch of the 40m Viatoris in 2018, Mikolaj offered us the chance to work with them once again on a larger 44m - Project Ace. As the previous exterior design for Conrad was so well received we were asked to adopt a similar and familiar approach to the styling - however, we were also free to evolve the design. With the plumb bow, Ace already gave us stronger lines and a more modern appearance. Together with the snow white & gloss black colour scheme, she's timeless. The contrasting snow white hull & superstructure on the gloss black of the deckhouses and hull window band, which discreetly conceal the large window apertures, give the vessel a distinctive graphic profile, while the X detail midship harnesses a sense of power, purpose and direction. The design studio's signature undercut "rolling wave" on the superstructure reflects the sky above and the water below, simultaneously casting captivating shadows on the decks as the sun moves across the sky. It is a dynamic, feminine, sharp yacht with a bold, striking silhouette. Proportionally pleasing to the eye at from every angle, carefully considered sweeping lines and fine sculpted details emerge as you approach the yacht. We always aim to have a harmonious connection between the interior & exterior. We worked closely with m2atelier, incorporating, for example, their request for bigger windows in places to complement the stunning interior. The transitions between interior & exterior spaces work very well. My favorite place on board? The Sun deck with its very generous layout, as it feels like you're on board a much larger yacht.

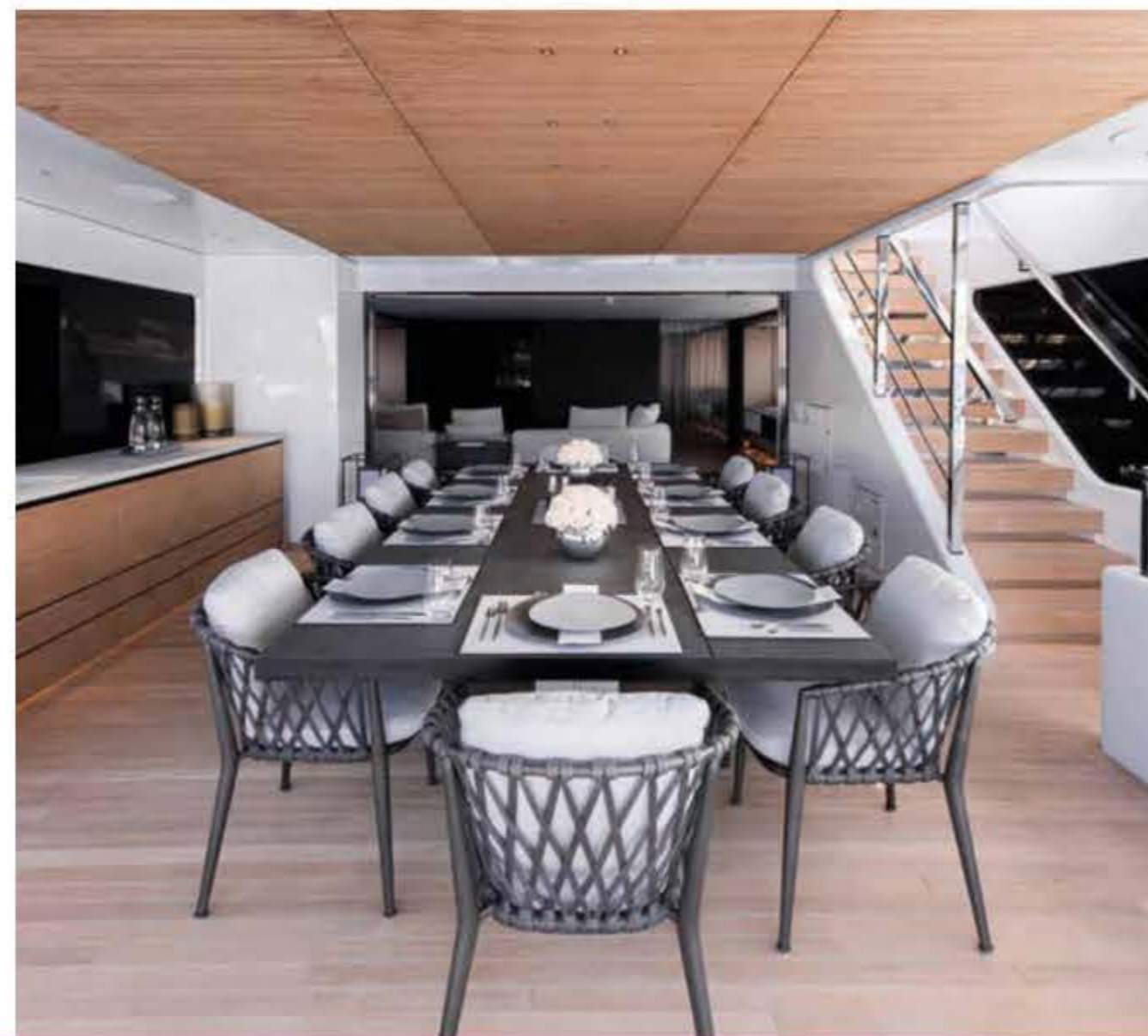
Interior Design

Marijana Radovic and Marco Bonelli, founders m2atelier

The client had asked us to build a modern, functional and attractive yacht. We worked on interpreting the essence of contemporary life in the context of a yacht's spaces, defying the conventions and rigid standards usually associated with nautical design. We decided to minimise, shift or rethink all the installations and solutions that in some way compromised the relaxed, functional and contemporary environment we were striving to create. This reworking didn't simply take the form of eliminating these functions - it was a more subtle revision where everything that was anachronistic or not strictly necessary was subjected to a critical analysis. The yacht's original layout was more standard. We worked on the openings, alignments, the perspectives, spatial continuity and proportions to enhance the overall perception of space. The feeling as you enter is that of being on a larger vessel. There are three key concepts in this project - fluidity, essentiality and continuity.

The solutions developed for ACE exemplify our yacht design philosophy - great informal flexibility, crisp elegance, clean shapes, openness to the outside with perspectives that bring the sea closer rather than shutting it out. Occupants can experience the yacht in absolute freedom, in a unique, utterly personal way. Our favourite areas on the yacht are the sundeck and master cabin. The sun deck is an extremely comfortable space, split into specific areas for every need without comprising the panoramic view. We chose to empty it as far as possible of fixed furnishings and to make it modular so it can be used in a free, relaxed way. The master cabin features distinctive stylistic solutions like the generous windows, furniture that seems to float above the floor and the marble-clad bathroom. This cabin embodies a balance between comfort and lightness, with suspended elements and a sensation of reduced gravity.

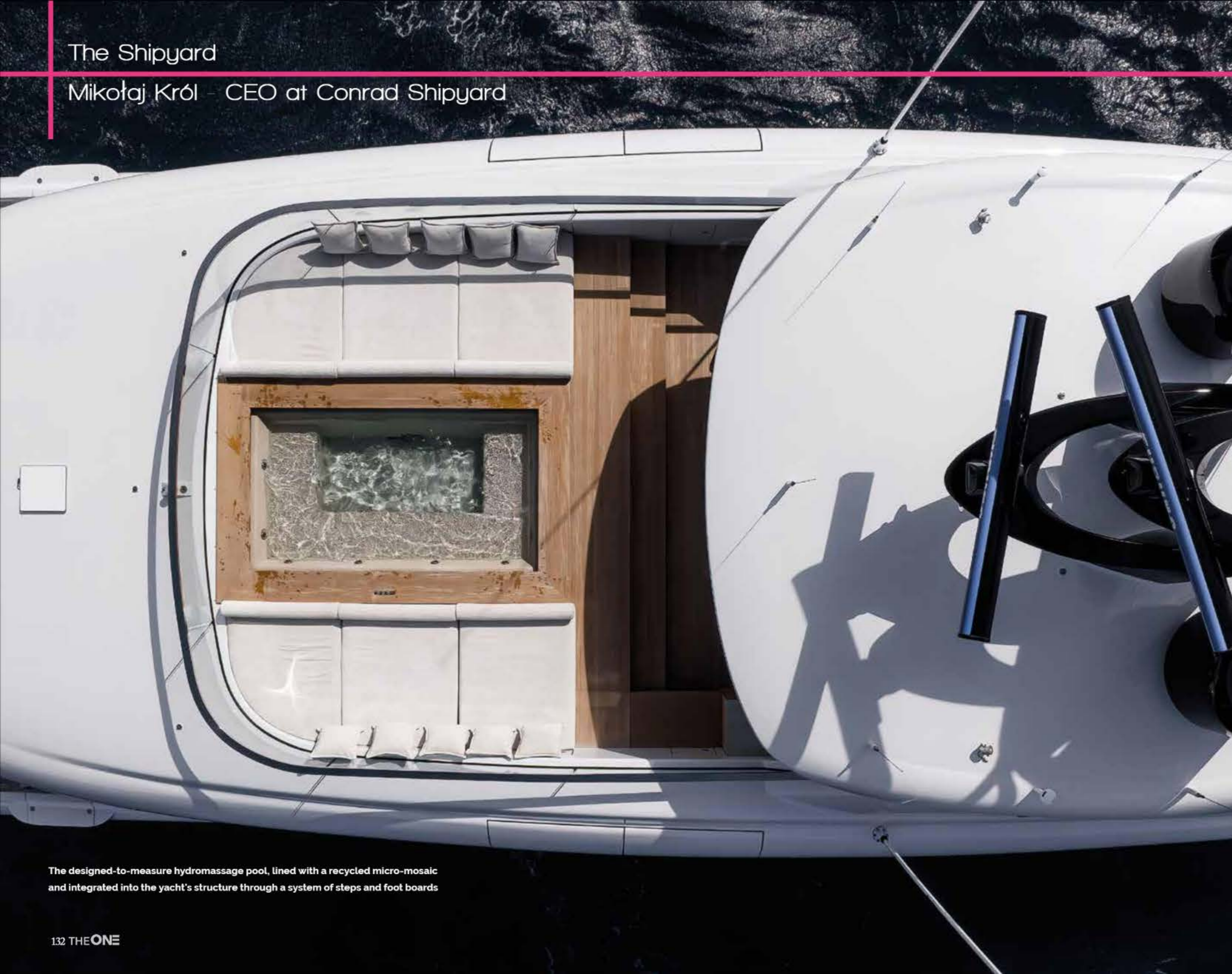
m2atelier designed, co-ordinated and aligned the exterior and interiors, working on harmonisation and details. The intriguing three-dimensional wood elements in the ceiling give proportion and warmth to the areas below.



ph. Giovanni Maggini

The Shipyard

Mikołaj Król – CEO at Conrad Shipyard



The designed-to-measure hydromassage pool, lined with a recycled micro-mosaic and integrated into the yacht's structure through a system of steps and foot boards



The Conrad C144s ACE is not only the largest yacht in Conrad's history, it's also the largest private superyacht ever built in Poland. For us, she represents evolution, another milestone in our history. She's also the first yacht to go into series production, even though ACE was initially intended to be a one-off, which means she is unique enough to attract more buyers. Hull number two is set for launch in March 2024, hull number three is planned for spring 2024 and hull number four is already for sale. ACE was designed for a client who had chartered larger superyachts and knew exactly what he wanted. The yacht has a timeless style and a silhouette that looks perfect now but will also look great in 15 years. The external design was created by the Reymond-Langton studio, which had previously designed the Viatoris unit for us. That's where the ACE project's history began. We received an extensive brief from the client, including layout. The Reymond-Langton office proposed the external design and the owner liked it. We made some adjustments, such as enlarging the windows and lowering the bulwarks. The client chose m2atelier himself, and we're very satisfied with the results. What I love about this yacht is the feeling of peace, relaxation, and balance. The main challenges we faced for ACE, first and foremost, was the pandemic. We signed the contract in January 2020 with a year's development and design work before that. And one thing we hadn't done before was the floor to ceiling windows in the salon. Theoretically, it's nothing innovative, but we're talking about a 45-meter yacht, not a megayacht. However, we did it, and the effect is stunning. The yacht's greatest strength is that it comes in under the 500 GT limit but still feels light. The design is adapted to fit within these constraints. Everything is done very solidly, with stability and without compromise.



Neutral tone-on-tone colours and dark slats are a recurring theme in ACE's interiors and exteriors. This page, the bright main deck owner's suite. Its bathroom (to side, top right), including the monolithic washbasins, is entirely panelled in Lasa marble. The stairs feature soft leather steps (to side, top and left) and link the interiors of three decks. On the sun deck, the bar counter with relaxation area and hydromassage pool to the side (to side, bottom)

